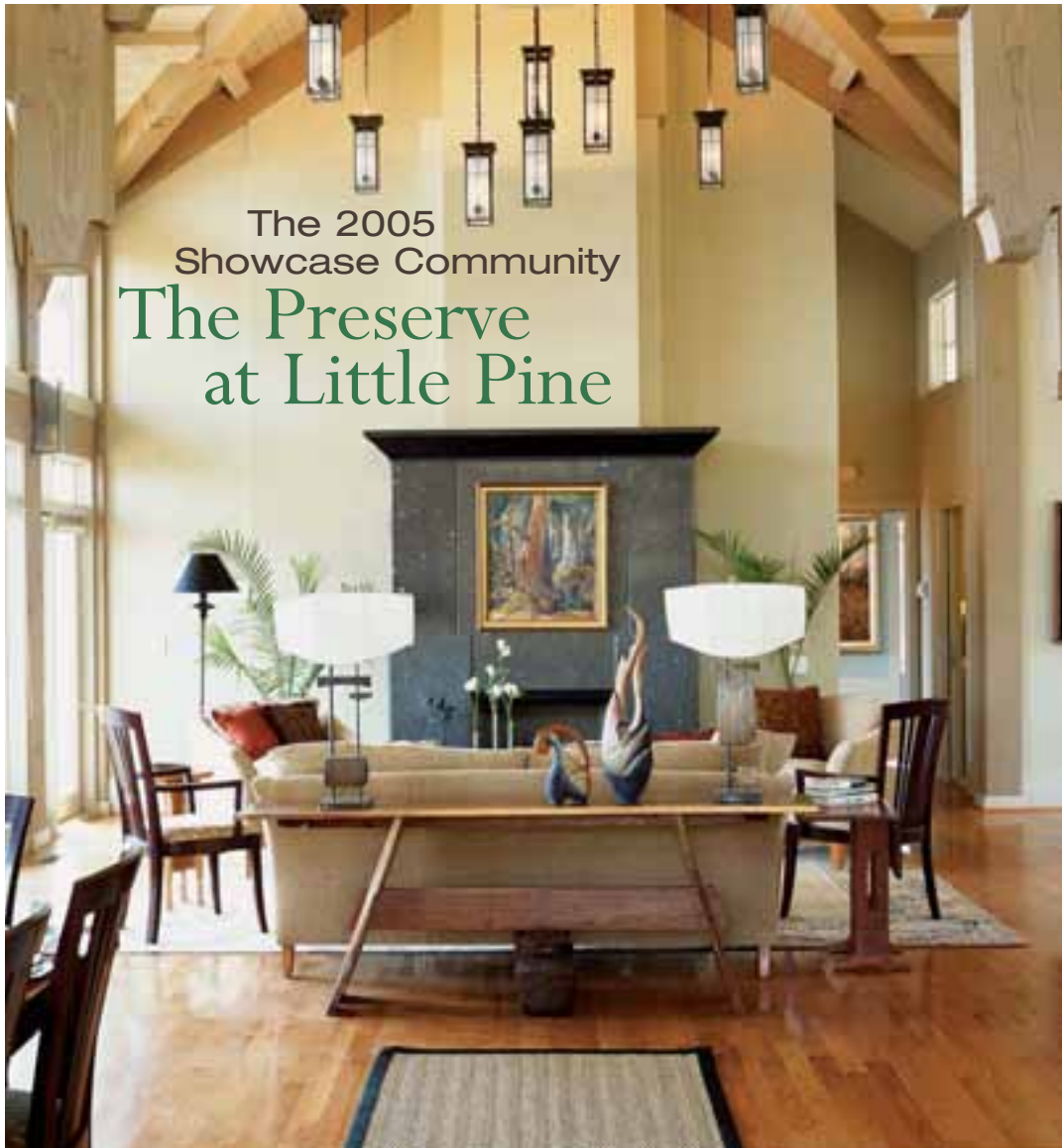


# Southern Accents

The magazine of fine Southern interiors and gardens

Asheville, North Carolina



The 2005  
Showcase Community  
The Preserve  
at Little Pine



Photography by Lisa Adams • Project Team & Nature Photography by Steven McBride

# THE PRESERVE AT LITTLE PINE

A M





# A SHOWCASE COMMUNITY

A half-hour from cosmopolitan Asheville, North Carolina, The Preserve at Little Pine provides a luxurious mountain escape.

**T**he 2005 *Southern Accents Showcase Community* encompasses some 2,500 acres and elevations of 4,300 feet in the mountains north of Asheville. So ideal is the natural setting at The Preserve at Little Pine, says developer and native Jack Fisher, that "our main goal is simply to preserve the unique character of this place, to develop in such a way as to make you want to come back again and again."

*Preservation* seemed the key word. When first conceived, it was immediately evident that The Preserve at Little Pine was truly a unique habitat, as untouched as our National Forests.

Wherever possible, the developers made use of old logging roads through the property instead of cutting new ones. And hiking and horse paths wind through a landscape that feels more like a National Park than a development. That's by design.

Fisher and partner Robert Whirley devised a development plan that uses conservation easements to leave 75 percent to 80 percent of future homeowners' property in a natural state. Only 70 home sites will be developed from Little Pine's first 1,000 acres. That keeps intact almost all the stands of mountain hardwoods and permanently protects slopes and coves for more than 200 plant and 100 animal species, including the residents who will make Little Pine home for at least part of the year.



NE A MOUNTAIN RETREAT



SPOTLIGHT

### JELD-WEN Custom Wood Windows and Doors

High in the mountains where temperatures dip overnight and where the big winds blow, exterior windows and doors have to perform to optimum standards. JELD-WEN delivers. But JELD-WEN reliability is obvious, as well, in products that don't have to stand up to the elements outside. Interior doors, for instance, offer a wide range of choices for homeowners and designers. And JELD-WEN doors can be ordered to fit just about any décor.





THE PRESERVE AT LITTLE PINE



SPOTLIGHT



**Metal Roofing Alliance**

For energy performance, durability, and design versatility, nothing beats metal roofing. So metal was an obvious choice for a house intended to last a long time in a demanding environment. The Alliance, created in 1998 to educate consumers about Investment Grade Metal Roofing, has helped secure a permanent place for this style of roofing in plans for the best homes across America. And as energy costs increase, the smart choice of metal is getting even smarter.

The Preserve represents a rare opportunity to establish a family mountain retreat like those of previous generations. This commitment to preservation guarantees a double legacy to successive generations of families who'll build memories here and to the natural setting protected in perpetuity.

Customers are already affirming the developers' approach. When Fisher and Whirley surveyed initial buyers about amenities they most valued, "they told us they wanted more of the same—bigger lots and more green space—to explore the wonders of this place."

Inspired by the setting, Asheville architect Robert Griffin wanted his design for a mountain retreat to feel anchored in the earth, yet at home in the sky. Inside and outside had to flow together. "To me," says Griffin, "that's what a mountain house is all about. That's why you come to the mountains."

Griffin also was committed to softening the house's environmental impact. For instance, a





THE PRESERVE AT LITTLE PINE



reflective metal roof—from **Metal Roofing Alliance**—keeps the two-zone **Lennox** HVAC system from having to work overtime, even on the hottest days. FiberCement exterior siding by **CertainTeed** is not only a tree-saving approach, it also minimizes maintenance in the long run.

And to assure technological adaptability, Griffin designed an infrastructure to support future solar heating and electrical generation systems.

“We wanted to show you could respond to aesthetic sensibilities and still build a healthy, environmentally responsible home,” says the architect.

Landmark Landscapes from nearby Arden was entrusted to mirror the goals of the house architecture. With expert selection and



SPOTLIGHT



**CertainTeed WeatherBoards™  
FiberCement Siding**

FiberCement siding by CertainTeed gives the Little Pine house a high-tech, low-maintenance advantage in resisting assault from wind, water, and wide-ranging temperatures. Options abound, because there's a wide range of colors and styles, including styles that imitate wood grains. Architects and builders can achieve almost any look that traditional wood construction offers, with this added bonus—no trees were used to produce it.





THE PRESERVE AT LITTLE PINE



placement of native plants, Landmark general manager John Thelen and his crews demonstrate what's possible when you make nature a design ally.

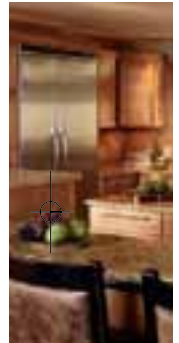
Windows in the house's most dramatic space, the vaulted timber-framed great room area, face east over a shaded deck. That allows for maximum morning light through a wall of argon-filled, double-paned JELD-WEN custom wood windows.

To fine-tune heat and light, Hunter Douglas shades and blinds protect interiors in nearly every room and support the indoor-outdoor feel by blending in perfectly with their surroundings. Most importantly, "they don't compete with the views," says Griffin.

It's the open layout of that main, upper room that especially demonstrates how Griffin's design and Ron Clemmer's interior choices respond to one another and to the influences on the other side of the windows.

"The whole color sense is pulled from the earth and trees," says Clemmer, an Asheville interior decorator who teams with Griffin on many projects. "We have the colors of lichen and tree bark, especially in the lower levels. At the top, we get the sky."

Nature-matching interior hues, combined with the expanse of the JELD-WEN windows



SPOTLIGHT



L. & J. G. Stickley, Inc.

Nothing serves the "mountain modern" theme of the house in The Preserve at Little Pine better than the broad choices offered in the L. & J. G. Stickley lines. You can mix and match with confidence, knowing that every piece communicates design integrity and proven comfort. Even if you're adding new pieces to a room or designing a whole house, says architect Robert Griffin, "it doesn't have that decorated-in-a-day look."



THE PRESERVE AT LITTLE PINE



SPOTLIGHT



**Viking Range Corporation**

Built restaurant-strong, Viking kitchen components serve the eye as well as the demanding cook. The line selected for the Little Pine house is the Designer Series, with stainless steel surfaces that echo the stone-against-wood look throughout the house.

This equipment is especially appropriate for an open design. It takes only a quick glance toward this welcoming kitchen to know that the house is ready to entertain.

and the **Hunter Douglas** shades, make walls disappear and lighten the visual weight of the Douglas fir timber frames. Over the seating area, the custom fixtures from The Walling Collection by **The Urban Electric Company** hang suspended like stars.

With such a commitment to the open feel, "furniture provides the obvious transitions through the house," says Griffin. In an important sense, he says, "the house becomes an envelope around furniture that defines the space."

Careful selections from a variety of **L. & J. G. Stickley** collections perform that duty effortlessly, says Clemmer. He chose larger pieces that echo Griffin's architecture and frame the connection between indoors and outdoors. And he made the most of

THE PRESERVE AT LITTLE PINE



SPOTLIGHT



**Lennox Hearth Products**

Step into the outdoor "room" created by this Lennox fireplace design. It's just a step away from the enclosed interiors but suggests a world of its own and encourages near year round entertaining.

**Lennox Industries**

Inside, you can enjoy comfort-adjusted heating and air conditioning, also from Lennox. There's a little bit of nature's peace and quiet inside as well, since Lennox engineering has put an end to the old era of noisy, energy-draining heating and air conditioning. Lennox systems lead the industry in quiet efficiency.

**L. & J. G. Stickle's** ability to mix elegance and livability. "You can walk right in and be comfortable," says Clemmer.

Griffin and Clemmer both like to contrast rough and smooth, organic and machine-made in a style that feels rooted in tradition and contemporary at the same time. Hence, the polished metal finishes in the **Baldwin** interior hardware and **Price Pfister** plumbing fixtures used throughout. These carefully selected surfaces set off the wood and stone that often surround them.

With **Baldwin's** comprehensive style guide and wide range of interior hardware offerings, selection and product coordination was quick and easy for the design team.

For splashes of contrasting colors and textures, Clemmer relies on carefully chosen regional artwork like the painting by **Will Henry Stevens**, the late Southeastern artist, over the fireplace in the great room.



THE PRESERVE AT LITTLE PINE



Plus, there's a range of handmade ceramic pieces on display. "It's like getting that rush of color in nature when a bird flies into the landscape," says Clemmer.

The central great room and dining areas merge with a very functional kitchen space. The kitchen relies on the appeal of **Viking Designer Series** appliances, chosen for their advantages of high performance and straightforward good looks.

The indoor-outdoor flow continues to the north-facing deck, where an outdoor "room" with a **Viking** outdoor grill adjoins the indoor kitchen. That allows for lounging and entertaining outside,



SPOTLIGHT



**Baldwin Hardware**

Details are key to completing every masterpiece. Fine craftsmanship is essential. It determines reliability and durability, which are taken for granted in hardware product lines. But well-thought-out and executed design explains the visual appeal of Baldwin Hardware products. They're the perfect finishing touches.

**Price Pfister**

Great style, stunning finishes, and fabulous features – all these traits are found in the Price Pfister plumbing fixtures selected for inclusion in the showhouse. Combine these characteristics with one of the most comprehensive warranties in the industry, and it's clear that Price Pfister was the obvious choice.

### THE PRESERVE AT LITTLE PINE

even when temperatures on the coolest side of the house give hosts an excuse for a fire in the **Lennox** hearth.

The master bedroom is all about the sky, which pours in through the arched window. From the bed, it's a tree house, where the **Simmons HealthSmart™** mattress promises comfort and respite. But you can vary the feel of the space by relaxing in front of the fire in the bedroom sitting area or by sharing an intimate breakfast on the private deck.

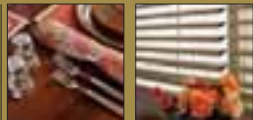
The master bath, with its corner-window views, repeats the integration of apparent opposites. A sculpted tree stands atop the gleaming surface of the soaking tub. Polished metal drawer handles and handmade pewter bathroom accessories by **MATCH** stand out against the custom wooden vanity, yet honor its lines.

Downstairs, the rooms leave the sky and reconnect with earthy tones and textures. The family room is a media room, made cozy with a **Lennox** woodburning stove. It's intended to be a place, says Clemmer, "for kicking off your shoes and being comfortable." A home office with a southern view allows for mixing a little business with a lot of pleasure.

The main downstairs bedroom elevates the organic feel to a level of serene luxury. A classic leather chair, the **L. & J. G. Stickley**



### SPOTLIGHT



#### MATCH

The handmade tradition of **MATCH** furnishings in pewter, iron, stone, and wood is perfect for a house that's anchored in a natural setting. Italian artisans craft and hallmark these pieces. Design is straightforward, classic. So the pieces are at home in a variety of contexts, from rustic to ultra-contemporary. **MATCH** says it all.

#### Hunter Douglas Window Fashions

Blinds and shades often amount to an on-off switch. You get too much heat and light or too little. Hunter Douglas has another idea. With innovative drawing and shading mechanisms, Hunter Douglas offers the flexibility of fine-tuning natural light so that it becomes another design element in a room. And a choice of colors affords designers and homeowners options to match any interior.



THE PRESERVE AT LITTLE PINE



SPOTLIGHT



**The Urban Electric Co.**  
Lighting by The Urban Electric Co. helped architect Robert Griffin imagine a house suspended in a sky, where clusters of lights in the living room evoke stars, and at sea, where Urban Electric fixtures, especially in the bathrooms, remind him of ship's lanterns.

**Simmons HealthSmart™**  
HealthSmart™ Bed by Simmons, with a removable zip-off panel providing protection against allergens and spills, helped fulfill the house's ambitions to be a healthy place to relax.

pieces with a century-old arts-and-crafts pedigree, and the fine linens all exude the confidence of tradition—and an invitation to off-load whatever is left of the stress you hauled up the mountain.

Whirley calls the look “mountain modern.” The selected furnishings “help us put together all the elements in a way that doesn’t feel exactly like a traditional house, yet you feel at home the minute you walk through the door.”

Fisher, as a mountain native, points

with pride at Griffin’s design, which maximizes the site’s natural advantages, and at decisions to use high-performance materials that respect the sensitive environment and conserve energy. He’s confident that discriminating home seekers will value those choices in the Little Pine community.

“Our best customers are the ones who’ve been looking in the mountains for a long time,” says Fisher. “When they see what they want, they know it right away.”

